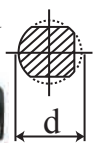
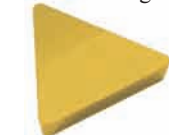


SHARS S-CTFP R/L Heavy Duty Boring Bars Right Hand

0° End Cutting Edge Angle For Positive Triangle TPG insert



Insert Style	Radius R	Order #	Price(D)
TPG 322 Tin	1/32"	424-0049	\$2.97
TPG 432 Tin	1/32	424-0062	4.95

Shank Square	OAL	Min. Bore	Model #	Insert #	Seat #	Seat Screw	Clamp #	Clamp Screw	Right Hand Order #	Left Hand Order #	USA Brand	SHARS (F)	
3/4"	10"	1.000"	S12S-CTFPR/L-3	TPG 32				CTFPN-5	CTFP-M5	404-1940	404-1944	\$156.00	\$40.95
1"	12	1.280	S16T-CTFPR/L-3	TPG 32				CTFPN-5	CTFP-M5	404-1941	404-1945	196.00	44.95
1-1/4"	14	1.530	S20U-CTFPR/L-4	TPG 43	TP22D	M3x8	CL-20	XNS-0620	404-1942	404-1946	209.00	52.50	
1-1/2"	14	2.060	S24U-CTFPR/L-4	TPG 43	TP22D	M3x8	CL-20	XNS-0620	404-1943	404-1947	229.00	65.95	

SHARS S-MCLN R/L Heavy Duty Boring Bars Right Hand

Negative 5° End Or Side Cutting Edge Angle For Negative 80° CNMG insert



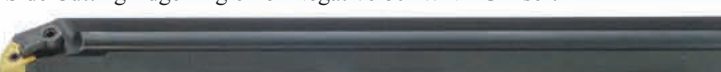
Insert Style	Order #	Price(D)
CNMG432 Tin	404-1958	\$3.95
CNMG432 DM YBC252	424-1127	4.15
CNMG432 EM YBG203	424-1158	4.15

**See Page 32 for Grade Information.*

Shank Square	OAL	Min. Bore	Model #	Insert #	Seat #	Lock Pin	Clamp #	Clamp Screw	Right Hand Order #	Left Hand Order #	USA Brand	SHARS (D)
3/4"	10"	1.000"	S12S-MCLNR/L-4	43		NL-0611	CL-6	XNS-0520	404-1771	404-1772	\$186.00	\$42.95
1"	12"	1.280	S16T-MCLNR/L-4	43		NL-0611	CL-6	XNS-0520	404-1950	404-1954	196.00	44.95
1-1/4"	14	1.530	S20U-MCLNR/L-4	43	C1203B	NL-0617	CL-6	XNS-0520	404-1951	404-1955	209.00	52.50
1-1/2"	14	1.780	S24U-MCLNR/L-4	43	C1203B	NL-0617	CL-6	XNS-0520	404-1952	404-1956	229.00	62.95
1-3/4"	14	2.030	S28U-MCLNR/L-4	43	C1203B	NL-0617	CL-6	XNS-0520	404-1953	404-1957	229.00	79.95

SHARS S-MWLN R/L Heavy Duty Boring Bars Right Hand

Negative 5° End Or Side Cutting Edge Angle For Negative 80° WNMG insert



Insert Style	Order #	Price(D)
WNMG 432 Tin	404-0391	\$4.95
WNMG 432 DM YBC252	424-2003	5.37
WNMG432 EM YBG203	424-2020	5.37

**See Page 32 for Grade Information.*

Shank Square	OAL	Min. Bore	Model #	Insert #	Seat #	Lock Pin	Clamp #	Clamp Screw	Right Hand Order #	Left Hand Order #	USA Brand	SHARS (D)
3/4"	10"	1.000"	S12S-MWLN/L-4	43		NL-0611	CL-20	XNS-0620	404-1773	404-1774	\$186.00	\$42.95
1"	12"	1.280	S16T-MWLN/L-4	43		NL-0611	CL-20	XNS-0620	404-1970	404-1973	196.00	44.95
1-1/4"	14	1.530	S20U-MWLN/L-4	43	W0803B	NL-0617	CL-20	XNS-0620	404-1971	404-1974	209.00	52.50
1-1/2"	14	1.780	S24U-MWLN/L-4	43	W0803B	NL-0617	CL-20	XNS-0620	404-1972	404-1975	229.00	74.95

SHARS S-MTUN R/L Heavy Duty Boring Bars Right Hand

Negative 3° End Cutting Edge Angle For Triangle TNMG insert



Insert Style	Order #	Price(D)
TNMG331DM YBC252	424-1731	\$3.99
TNMG331EM YBG203	424-1777	3.99
TNMG432 DM YBC252	424-1735	4.36
TNMG432 EM YBG203	424-1780	4.36

**See Page 32 for Grade Information.*

Shank Square	OAL	Min. Bore	Model #	Insert #	Seat #	Lock Pin	Clamp #	Clamp Screw	Right Hand Order #	Left Hand Order #	USA Brand	SHARS (E)
3/4"	10"	1.000"	S12S-MTUNR/L-3	33		NL-0410	CL-6	XNS-0520	404-1849	404-1853	\$156.00	\$40.95
1"	12	1.280	S16T-MTUNR/L-3	33		NL-0414	CL-6	XNS-0520	404-1850	404-1854	196.00	47.95
1-1/4"	14	1.530	S20U-MTUNR/L-4	43	T2203B	NL-0617	CL-12	XNS-0829	404-1851	404-1855	209.00	52.50
1-1/2"	14	2.060	S24U-MTUNR/L-4	43	T2203B	NL-0617	CL-12	XNS-0829	404-1852	404-1856	229.00	62.95

SHARS MWLN Turning & Boring Sets

APPLICATION:
• Semi-finished to light roughing

SET INCLUDES:

- 1" square shank toolholder MWLNR164D with 6" length
- 1" diameter 12" long A16-MWLN4 boring bar with through-the-bar coolant hole
- WNMG 432 Tin Insert **10 Pieces**
- F = .640
- K = 14 • Min. Bore 1.200"

USA Brand Order # 404-0390

\$486.00

\$128.⁹⁵(E)

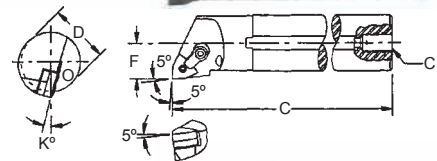
Replacement

WNM 432 MG KC9025 80°

Trigon tin coated inserts

404-0391

\$4.⁹⁵(D)



SHARS Mini Indexable End Mills

Triangle TPG 221 Insert • 90° Cut • Positive Rake

3 Pc Mini End Mill Set 404-6510

1 of each size w/ case **\$29.⁹⁵(E)**

Shank Diameter	Cutting Diameter	OAL	Body Length	Order #	Price(D)
1/2"	1/2"	3"	1"	404-6511	\$12.00
1/2"	9/16	3	1	404-6512	12.50
1/2"	5/8	3	1	404-6513	14.00

Insert Style	Radius	C2	C6	Price(F)	Tin Coated	Price(B)
TPG 221	1/64"	404-6952	404-6953	\$2.00		\$2.75
TPG 222	1/32	404-6954	404-6955	2.00		2.75

