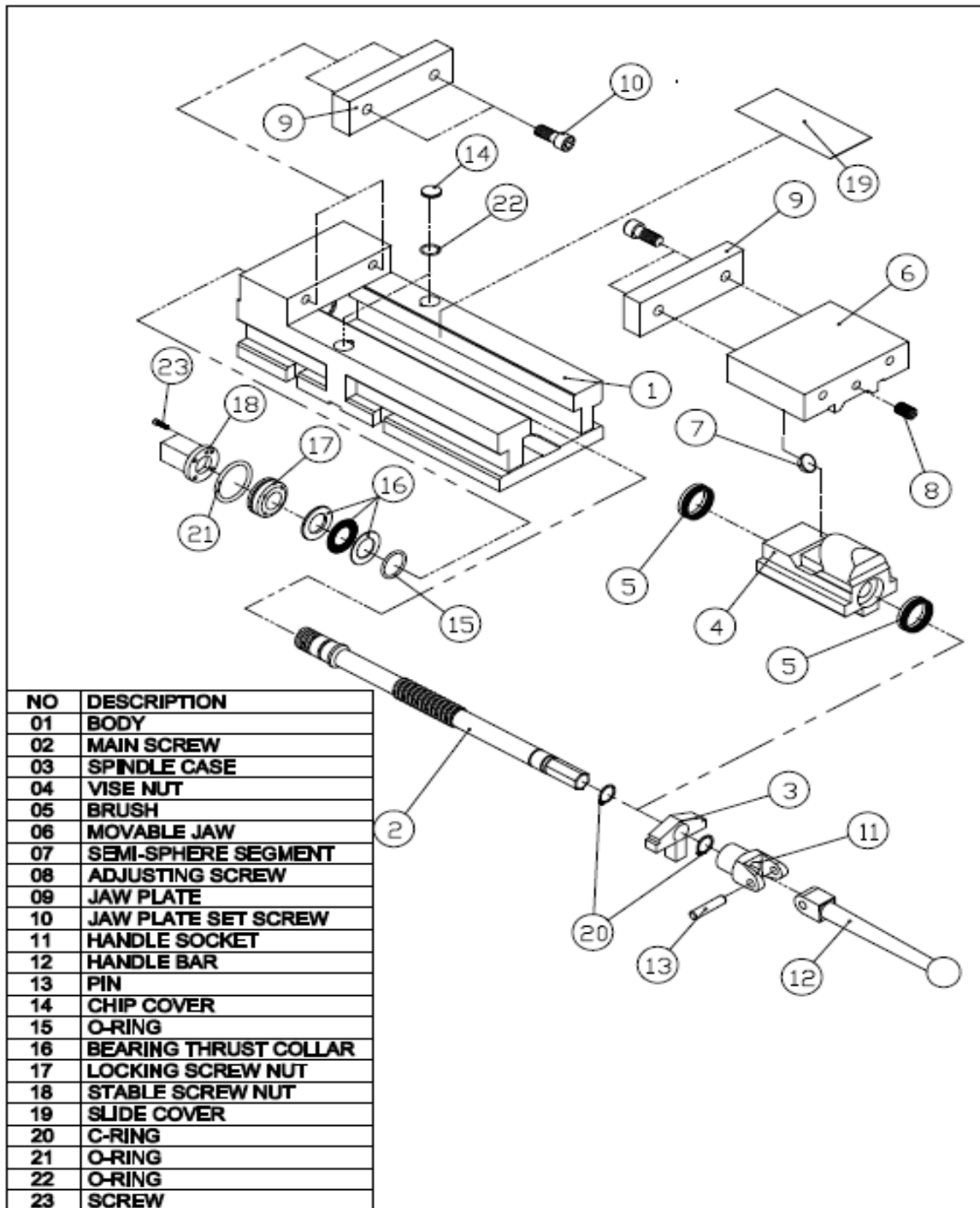


SHARS® SHARS

660U Premium Vise



NO	DESCRIPTION
01	BODY
02	MAIN SCREW
03	SPINDLE CASE
04	VISE NUT
05	BRUSH
06	MOVABLE JAW
07	SEMI-SPHERE SEGMENT
08	ADJUSTING SCREW
09	JAW PLATE
10	JAW PLATE SET SCREW
11	HANDLE SOCKET
12	HANDLE BAR
13	PIN
14	CHIP COVER
15	O-RING
16	BEARING THRUST COLLAR
17	LOCKING SCREW NUT
18	STABLE SCREW NUT
19	SLIDE COVER
20	C-RING
21	O-RING
22	O-RING
23	SCREW