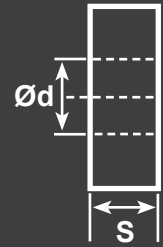
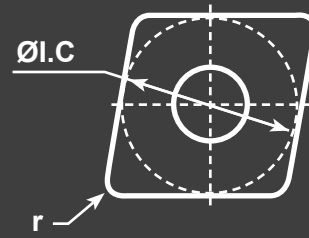


PCBN

Compatible Workpiece Materials



Hardened Material



SKU#	ANSI#	ISO#	ØI.C	S	Ød	r	START SPEED	START FEED
424-3390	CCGW-21.51	CCGW060204	0.25	0.094	0.109	0.016	500 SFPM (320-800)	0.006 in/r (0.001-0.012)
424-3391	CCGW-21.52	CCGW060208	0.25	0.094	0.109	0.31	500 SFPM (320-800)	0.006 in/r (0.001-0.012)
424-3395	CCGW-32.51	CCGW09T304	0.375	0.156	0.17	0.016	500 SFPM (320-800)	0.006 in/r (0.001-0.012)
424-3396	CCGW-32.52	CCGW09T308	0.375	0.156	0.17	0.31	500 SFPM (320-800)	0.006 in/r (0.001-0.012)

K Cast Iron	+	+		
N Ferrite Materials				○
H Hardened material			○	
	PCBN			PCD
SKU#	YCB011	YZB221	YCB012	YCD011
424-3390			●	
424-3391			●	
424-3395			●	
424-3396			●	

+ Good Working Conditions

○ General Working Conditions

— Adverse Working Conditions